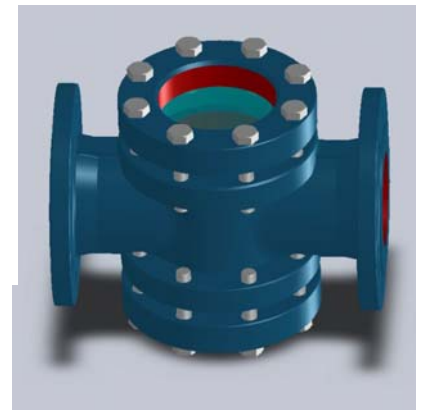
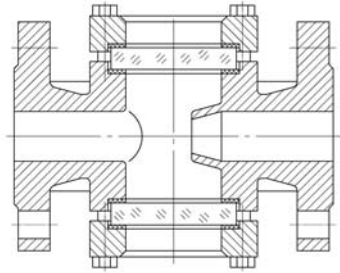


**Design acc. : DIN 3237**  
**Face to face : DIN EN558-1**  
**Flange end :ANSI B16.5**  
**Inspection and test acc. : API 598**  
**Glass acc. : DIN 7080 / Metal Glas**  
**Body : CF8M / WCB**



**FIG : 510**

**Page 1**

**FIG : 510**

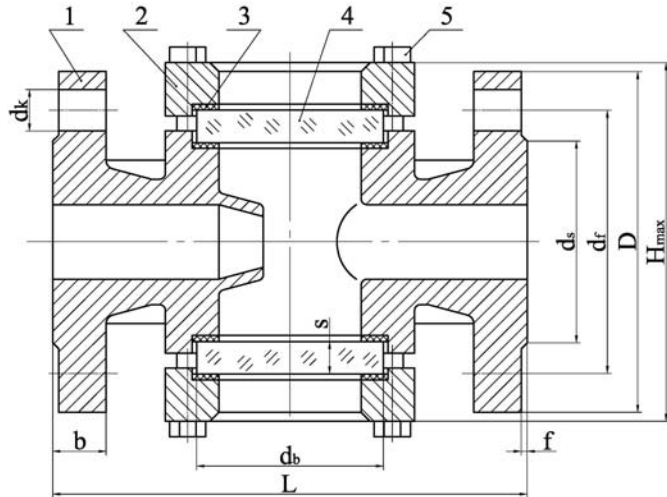


FIG.	Pressure	Material	Range
131.510	150	WCB	1/2" - 8"
132.510	300	WCB	1/2" - 8"
151.510	150	CF8M	1/2" - 8"
152.510	300	CF8M	1/2" - 8"

**Design acc. : DIN 3237**  
**Face to face : DIN EN558-1**  
**Flange end : ANSI B16.5**  
**Inspection and test acc. : API 598**  
**Glass acc. : DIN 7080 / Metal Glas**

**Material list**

NO.	Part	Material	
		FIG. 151.510 / 152.510	FIG. 131.510 / 132.510
1	Body	CF8M	WCB
2	Bonnet	CF8M	WCB
3	Body seal	Graphite	Graphite
4	Glass	DIN7080 / Metal Glas	DIN7080 / Metal Glas
5	Bolt	B8M	B8

**Dimension List**

Class	Size	L	b	db	s	f	ds	dr	D	n-dk	Hmax	Weight(KG)
150LB	1/2"	130	11.2	45	10	2	35	60.5	89	4-16	100	3.5
	1"	160	14.3	63	10	2	51	79.2	108	4-16	111	6.0
	2"	230	19.1	100	15	2	92	120.7	152	4-19	170	15.6
	3"	310	24	125	20	2	127	152.4	191	4-19	216	33.4
	4"	350	24	150	25	2	157	190.5	229	8-19	236	45.5
	5"	400	24	175	30	2	186	216	254	8-22	263	53
	6"	480	25.4	200	30	2	215.9	241.3	279	8-22	288	65
	8"	600	28.6	200	30	2	269.9	298.5	343	8-22	350	102
300LB	1/2"	130	14.3	45	10	2	35	66.5	95	4-16	100	3.7
	1"	160	17.3	63	15	2	51	89	124	4-19	111	7.2
	2"	230	22.2	100	25	2	92	127	165	8-19	170	17.8
	3"	310	28.5	125	25	2	127	168.1	210	8-22	216	37.8
	4"	350	31.8	150	30	2	157	200.2	254	8-22	236	53.5
	5"	400	35	175	35	2	186	235	279	8-22	273	65
	6"	480	36.5	200	35	2	215.9	269.9	318	8-22	298	73
	8"	600	41.3	200	35	2	269.9	330.2	381	8-22	360	118