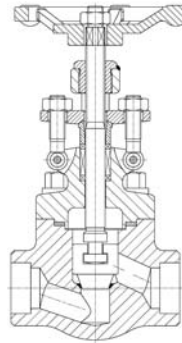


PN100**Design acc. :****AD 2000 A4****ATEX 2014/34/EU****API 602 .****Socket-welding : ASME B16.11 .****Screwed end: DIN259 (BSP) .****Test and inspection : DIN EN12266 .****Body : C22.8 / 1.4401****FIG : 106****Page 1****FIG : 106**

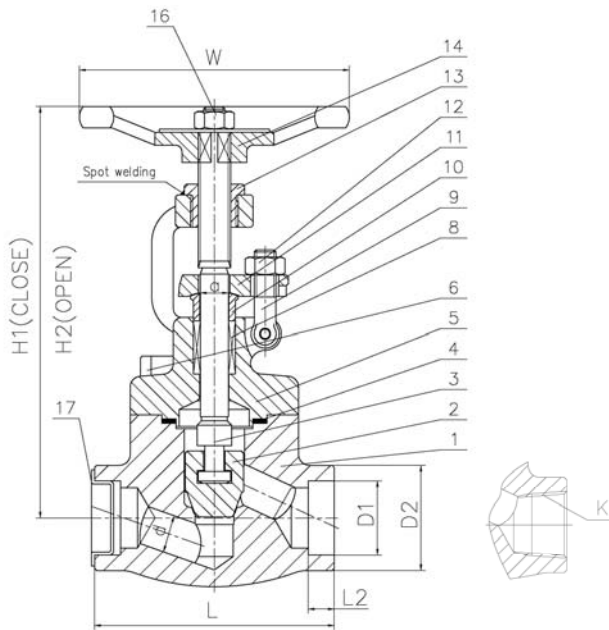


FIG.	PN	Material	Range
147.106	100	C22.8	DN10-DN50
237.106	100	1.4401	DN10-DN50

Design acc. :
AD 2000 A4
ATEX 2014/34/EU
API 602 .
Socket-welding : ASME B16.11 .
Screwed end : DIN259 (BSP) .
Test and inspection : DIN EN12266 .

Material List

NO.	Part	Material	
		FIG: 147.106	FIG: 237.106
1	Body	C22.8+STL	1.4401+STL
2	Disc	1.4021	1.4401
3	Stem	1.4006	1.4401
4	Bonnet gasket	Spiral wound graphite+1.4301	Spiral wound graphite+1.4401
5	Bonnet	C22.8	1.4401
6	Bolt	G	A4
8	Packing	Flexible graphite +s.s.wire	Flexible graphite +s.s.wire
	Packing	Flexible graphite	Flexible graphite
9	Eyebolt	G	A4
10	Packing bushing	1.4021	1.4401
11	Gland flange	C22.8	1.4401
12	Nut	YK	A4
13	Stem nut	1.4006	ZCuAl10Fe3
14	Handwheel	A197	A197
16	Lock nut	YK	A4

Dimension List

PN	DN	L	a	H1	H2	d	D	W	Socket-welding		Screwed end K (BSP55°)	Weight(KG)
									D1	L2		
100	10	79	11.5	148	158	6.5	34	100	17.6	9.6	3/8"	2.1
	15	79	11.5	148	158	10	34	100	21.7	9.6	1/2"	2.0
	20	92	11.5	148	158	13	40	100	27.1	12.7	3/4"	2.2
	25	111	13	176	192	17.5	49	125	33.8	12.7	1"	3.8
	32	120	16	209	227	23	58	160	42.6	12.7	1 1/4"	5.5
	40	152	16	221	241	28.5	64	160	48.6	12.7	1 1/2"	7.1
	50	172	20	255	279	35	78	180	61.1	15.9	2"	11.5